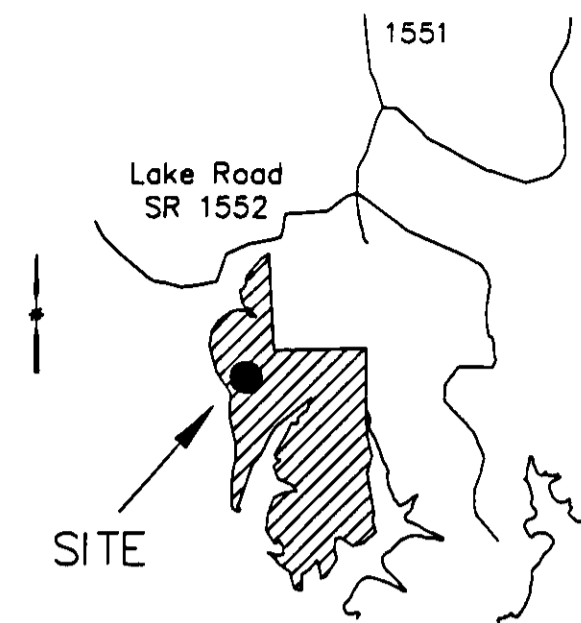


VICINITY MAP - MCDOWELL COUNTY

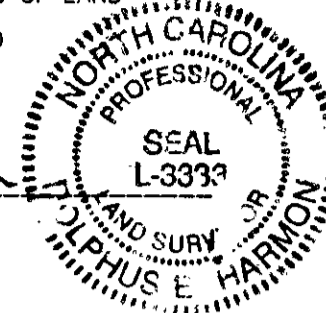
(NOT TO SCALE)



I, DOLPHUS E. HARMON, PROFESSIONAL LAND SURVEYOR, DO HEREBY CERTIFY THAT THIS PLAT WAS DRAWN FROM AN ACTUAL SURVEY UNDER MY SUPERVISION; THAT THE REFERENCES CITED HEREIN WERE USED; THAT THE RATIO OF PRECISION BY LAT AND DEP IS 1:10,000; THAT BOUNDARY LINES NOT SURVEYED ARE CLEARLY INDICATED; THAT THIS PLAT WAS PREPARED IN ACCORDANCE WITH NC GEN STAT 47-30 AS AMENDED.

THIS SURVEY IS LOCATED IN A PORTION OF MCDOWELL COUNTY THAT IS UNREGULATED AS TO AN ORDINANCE THAT REGULATES PARCELS OF LAND
THIS SURVEY IS A RECOMBINATION OF EXISTING LOTS RECORDED IN PB 7 PG 56 DUE TO STREET REALIGNMENT

WITNESS MY HAND AND SEAL: *Dolphus E. Harmon*



act REVIEW OFFICER OF *McDowell* COUNTY, CERTIFY THAT THE MAP OR PLAT TO WHICH THIS CERTIFICATION IS AFFIXED MEETS ALL STATUTORY REQUIREMENTS FOR RECORDING.
act *1/30/03*
REVIEW OFFICER DATE

FILED IN McDowell County, NC
on Jan 30 2003 at 02:28:13 PM
by: PATRICIA A. REEL
Register of Deeds
BOOK 8 PAGE 51

APPROVED TO RECORD
TAX DEPARTMENT
Am 1/30/03

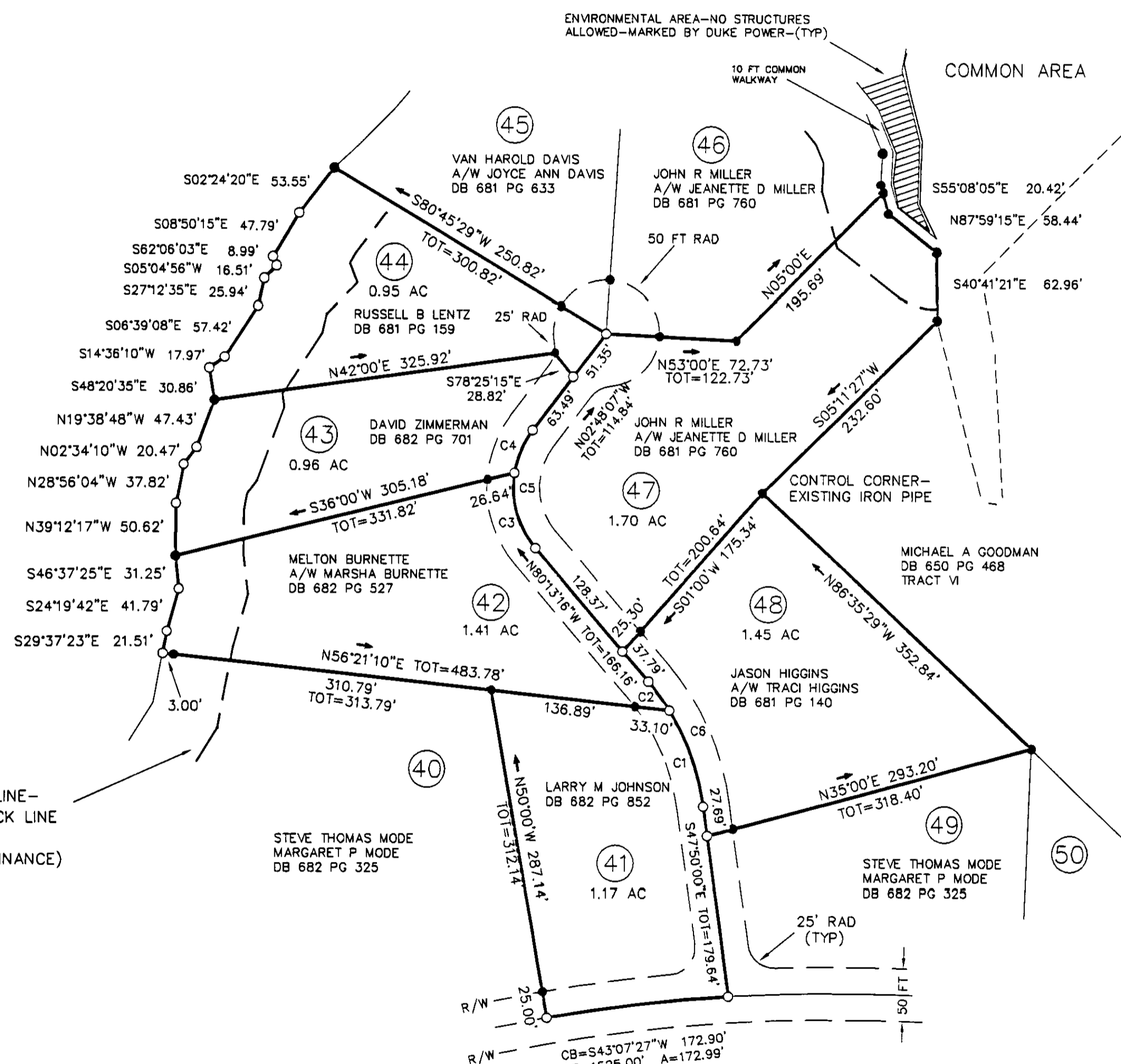
MCDOWELL COUNTY NORTH CAROLINA

FILED FOR REGISTRATION AT 2:26 O'CLOCK P M THIS
THE 30 DAY OF January 2003 AND
RECORDED IN PLAT BOOK 8 AT PAGE 51

Patricia A. Reel
REGISTER OF DEEDS MCDOWELL COUNTY

By: *Butt R. Fender*
Assistant

LAKE JAMES



PRIMARY STRUCTURE SETBACK LINE -
MCDOWELL COUNTY 65 FT SETBACK LINE
(75 FT IF STEEPER THAN 2:1)
(SEE LAKE JAMES PROTECTION ORDINANCE)

CURVE TABLE				
CURVE	CH. BEARING	CHORD	RADIUS	LENGTH
C1	S59°49'39"E	95.59'	230.00'	96.29'
C2	N76°01'17"W	33.69'	230.00'	33.72'
C3	N65°37'58"W	74.90'	90.00'	77.25'
C4	S16°55'23"E	43.92'	90.00'	44.36'
C5	N41°30'41"W	112.57'	90.00'	121.61'
C6	S64°01'38"E	128.29'	230.00'	130.01'

NOTES

- 1 - THIS SURVEY IS A RECOMBINATION OF PREVIOUSLY RECORDED LOTS IN MCDOWELL COUNTY WHICH HAS NO SUBDIVISION ORDINANCE AT THIS TIME
- 2 - ALL DISTANCES ARE HORIZONTAL
- 3 - NO NCGS HORIZONTAL CONTROL WITHIN 2000 FT

BEING PART OF DEED BOOK 666 PAGE 586
AND ALSO PART OF PLAT BOOK 6 PAGE 42
AND PB 7 PG 56

SEE RESTRICTIONS - DEED BOOK 666 PAGE 586
DEED BOOK 680 PAGE 447

FINAL PLAT

SUNSET POINT-SECTION TWO-REVISION #1

REVISED LOTS: 41,42,43,44,47, AND 48

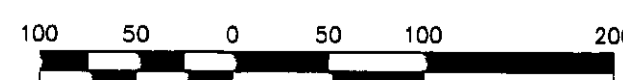
SURVEY BY: DOLPHUS E. HARMON P O BOX 827 MORGANTON NC 28680 828-438-9001

PROJECT MANAGER	SCALE	CAD BY	PROJECT DATE	FILE DATA	PROJECT NUMBER
DEH	1" = 100'	DEH	JAN 30 2003	SUBD.DWG	01082

LEGEND NOTES

- 1 - ALL LOTS CORNER IN CENTER OF 50 FT R/W AND ARE REFERENCED AT R/W
- 2 - POINTS ALONG SHORELINE ARE UNMARKED EXCEPT FOR LOT CORNERS AND ANY IRON PIPES FOUND FROM ORIGINAL BOUNDARY SURVEY BY ABERNATHY AND ASSOC
- 3 - ALL CORNERS SET BY WEST AND ASSOC ARE 1/2" REBAR
- 4 - POINTS ALONG SHORELINE ESTABLISHED BY ABERNATHY AND ASSOC - SEE PB 6 PG 82

SCALE IN FEET



NEBO TWSP - MCDOWELL COUNTY - NORTH CAROLINA